



greengo[®]
YOUR TURFCARE UNIT

TURFCARE

All-in-One
Anywhere
Anytime

DATA ACQUISITION

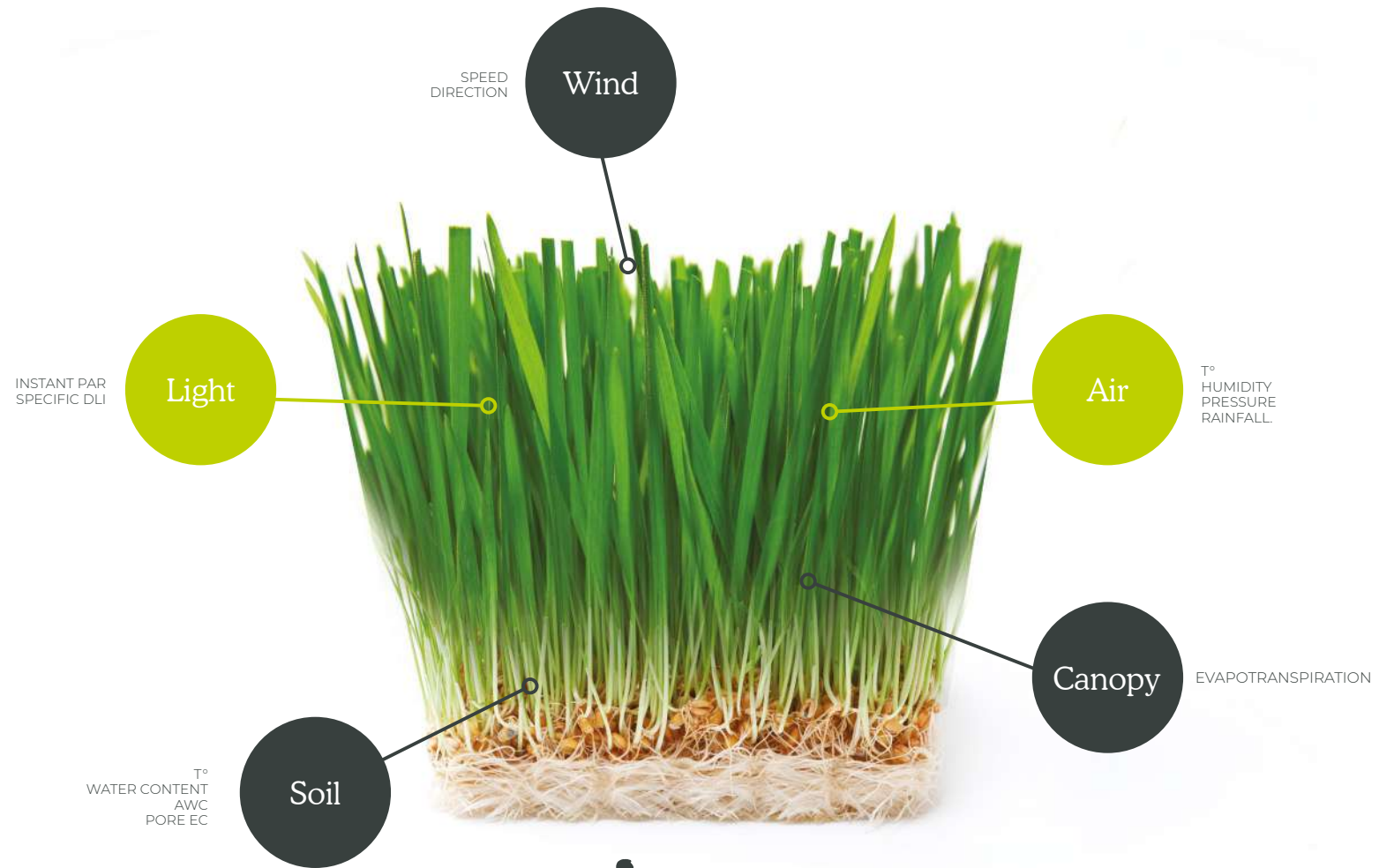
- portable
- geolocalized
- solar powered
- greenkeeper-tailored

LOGGING

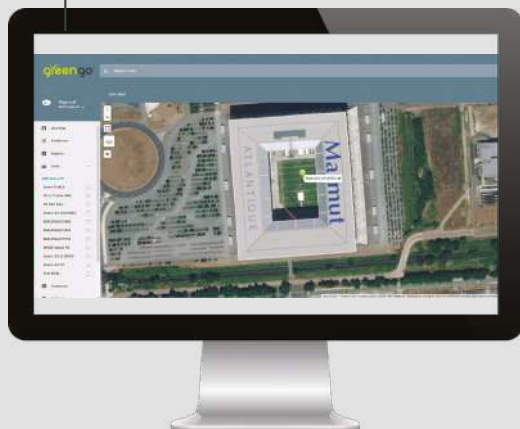
- input
- work
- performance
- pest



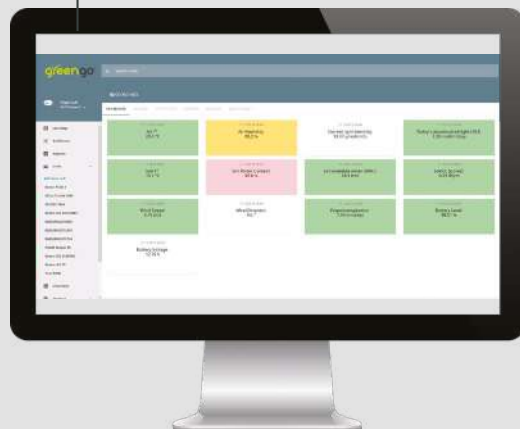
greengo[®]
YOUR TURFCARE UNIT



Where is my GreenGO right now?



What's the situation on my pitch?

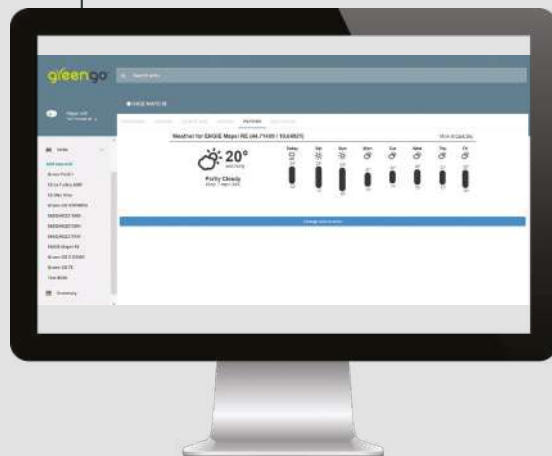


Plan or Record

A screenshot of the GreenGO interface showing a table with columns for various data points. The table has a header row and several rows of data. A sidebar on the left is visible.

- Fertilizations
- Biochemicals and biostimulants
- Maintenance work
- Irrigation
- Chemical pest control
- Geolocalized pest log
- Performance parameters
- Soil/Water analysis results

What weather can I expect?



What's my historical data?



Technical Info

Sensors by Decagon Devices Inc. (USA)

Soil: GS3

Air, solar radiation , wind, rain: ATMOS 41

Photosynthetically Active Light: QSO PAR

Data acquisition and DTP

Data acquisition interval: 1 minute

Data transfer interval (refresh): 5 minutes

Data transfer module: GPRS with micro data SIM

Power supply

12V 10W solar panel

Rechargeable battery





green go[®]
YOUR TURFCARE UNIT



Turf Europe Srl

Registered Office
Via Malasoma, 24
56121 Pisa (Italy)
info@turfeurope.eu

Operational Headquarters
Via dell'Ambrogiana, 5
57127 Livorno (Italy)
info@turfeurope.eu

Turf Europe Srl is a company that provides consulting, training and R&D services on precision agriculture, sports turf and urban green areas. Our aim is to provide high-end technological services and knowledge transfer for high quality turfgrass surfaces and for precision farming, while also curbing environmental impact, agronomic inputs and management costs.