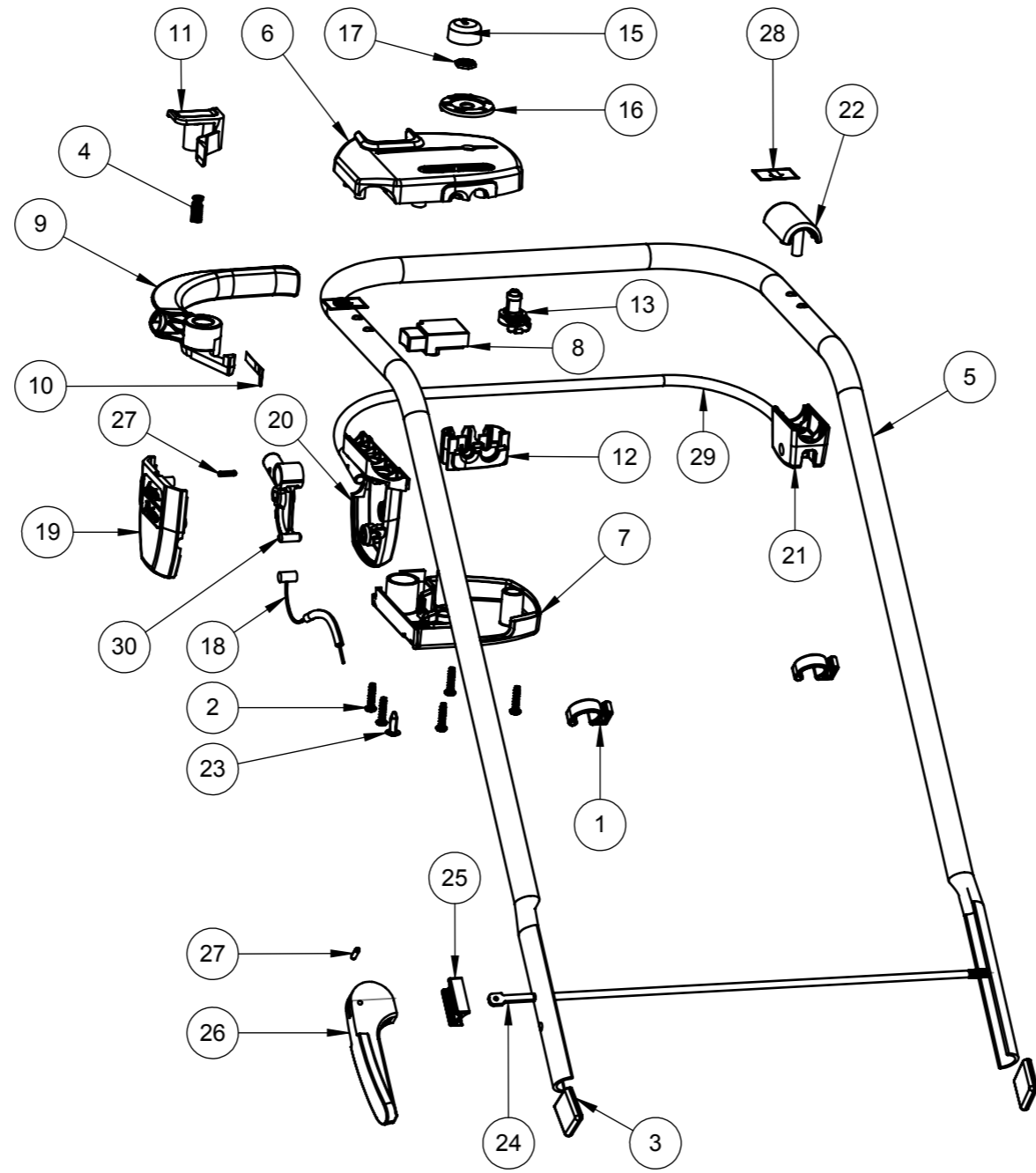


8
PROCESS ROUTING



REV	ECR NO.	DESCRIPTION	DRAWN BY DATE	CHKD BY DATE	
REVISIONS					
<b>TURFMECH</b> <small>Tel: +44 (0)1889 271503 www.turfmech.co.uk</small>		<b>PART DESCRIPTION</b> Li-Ion 12 14 17 <small>REMOVE ALL BURRS AND SHARP EDGES</small> <small>Notice For General Tolerances for Machining. Unless Otherwise Stated</small> <small>.00 = +/- 0.125mm</small> <small>.0 = +/- 0.25mm</small> <small>1 = +/- 0.5mm</small> <small>General Angular Tolerance = +/- 0.5 degrees</small>		<b>PART NUMBER</b> <h2 style="margin: 0;">LI-ION 12 14 17</h2>	SHEET 1 OF 1
		<b>MATERIAL DESCRIPTION</b>			<b>FINISH</b>
<b>WHERE USED</b>			<b>THIRD ANGLE</b>	<b>NOT TO SCALE</b>	
<b>WEIGHT</b>			<b>DIMENSIONS</b> <small>IN mm</small>	<b>NOT TO SCALE</b>	

Lib35 Top Handle

ITEM NO.	PART NUMBER	DESCRIPTION	Top Handle/QTY.
1	F016T49524	Cable Clip	3
2	F016T49429	SELF CUTTING SCREW	5
3	F016J10354	30 X 3 X 25Mm Flat Sleeve - Black	2
4	F016T49226	COMPRESSION SPRING	1
5	F016J11047	Li-Ion Top Handle driven	1
6	F016A57942	SWITCH COBER UPPER	1
7	F016T49637	SWITCH CASE LOWER	1
8	F016T49229	SWITCH 3 AMP	1
9	F016L65675	Switch Lever Red	1
10	F016T49845	SPRING LEVER RETURN	1
11	F016T49223	BUTTON SWITCH GRIPPER	1
12	F016T49636	Cable Clamp	1
13	F016T49468	POTENTIOMETER	1
15	F016T49480	SELECTOR KNOB	1
16	F016L37457	Bezel - Speed Controller Black	1
17	F016T45527	NUT ELECTRONIC SPEED CONTROLLER	1
18	F016A57920	DRIVE CABLE	1
19	F016L57924	BALE BAR HOUSING COVER	1
20	F016L57925	Bale Bar Housing Inner	1
21	F016A57928	Bale Bar Bush Housing	1
22	F016A57929	Bale Bar Bush Hous. Cover	1
23	F016L36542	SCREW	1
24	F016J11074	Electric Camlock Spindle	1
25	F016L66199	Cam Lock Saddle	1
26	F016T48384	Camlock Lever	1
27	F016T56145	COILED PIN	2
28	F016A58021	TRANSFER - CLUTCH ARROW	1
29	F016T49505	BALE BAR	1
30	F016T49507	LEVER BALE BAR	1

8  
PROCESS ROUTING

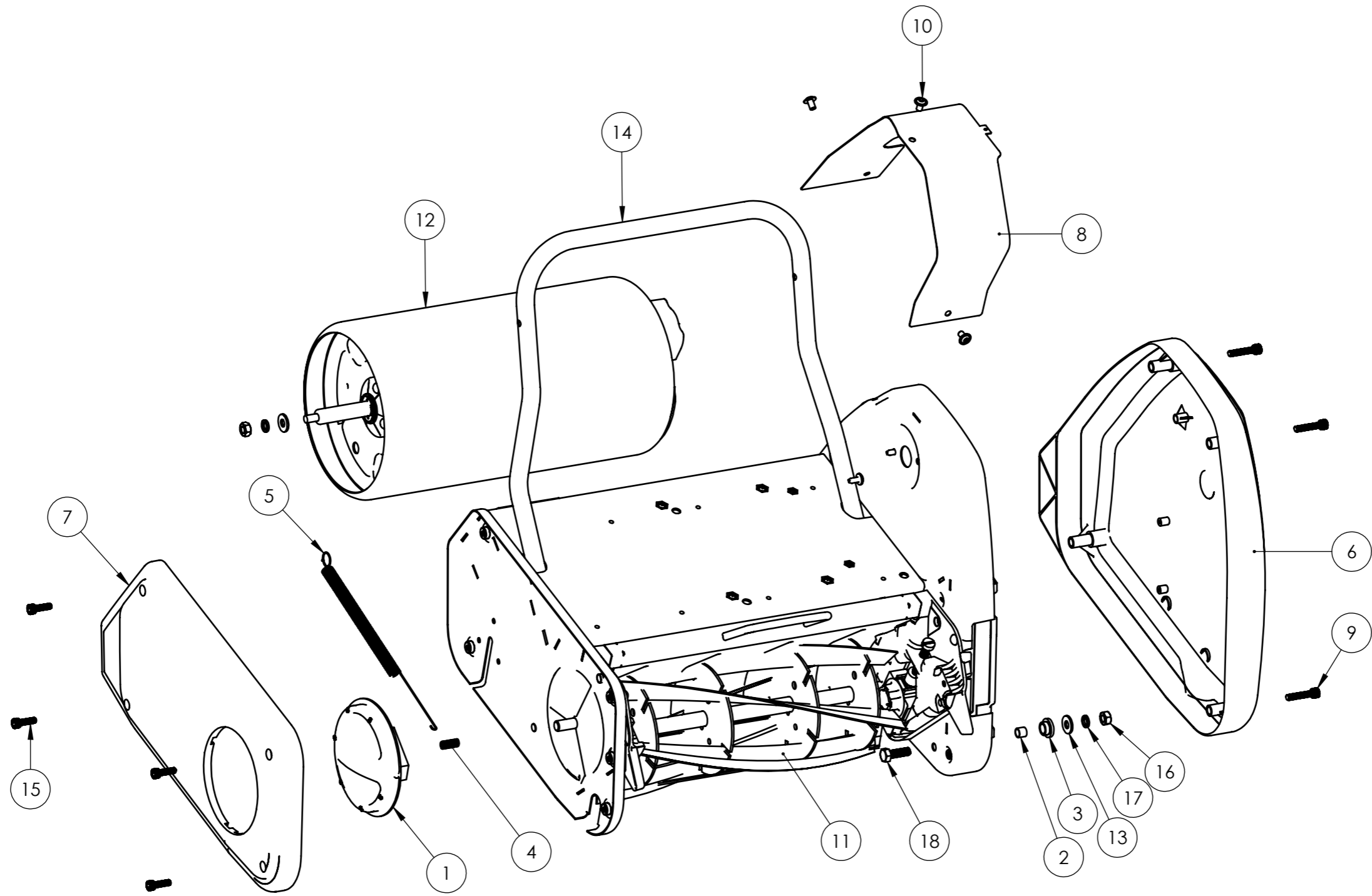
REV	ECR NO.	DESCRIPTION	DRAWN BY DATE	CHKD BY DATE
REVISIONS				
<b>TURFMECH</b> Tel: +44 (0)1889 271503 www.turfmech.co.uk	<b>PART DESCRIPTION</b> Li-Ion 12 14 17		<b>PART NUMBER</b>	
	REMOVE ALL BURRS AND SHARP EDGES		<b>LI-ION 12 14 17</b>	
	Notice For General Tolerances for Machining. Unless Otherwise Stated .00 = +/- 0.125mm .0 = +/- 0.25mm 1 = +/- 0.5mm		SHEET 1 OF 1	
	General Angular Tolerance = +/- 0.5 degrees		<b>MATERIAL DESCRIPTION</b>	
	Notice For General Tolerances for Fabrication. Unless Otherwise Stated 100mm and under +/- 1mm 100mm up to 1000 +/- 2mm 1000mm and over +/- 3mm		<b>FINISH</b>	
<b>WHERE USED</b>		<b>THIRD ANGLE</b>		
<b>WEIGHT</b> Kg		<b>DIMENSIONS</b> IN mm		
		<b>NOT TO SCALE</b>		

PROPRIETARY AND CONFIDENTIAL THE INFORMATION CONTAINED IN THIS DRAWING IS THE SOLE PROPERTY AND COPYRIGHT OF TURFMECH MACHINERY LTD. IT IS ISSUED FOR INFORMATION USES ONLY AND MUST NOT BE DISCLOSED TO THIRD PARTIES, LOANED, REPRODUCED, IN PART OR USED IN MANUFACTURING FOR ANY OTHER PURPOSE WITHOUT WRITTEN CONSENT

## Lib35 Drive Assembly

ITEM NO.	PART NUMBER	DESCRIPTION	QTY.
1	F016A75060	DRIVE SHAFT	1
2	F016A57838	BALL BEARING	2
3	F016A75522	Bearing Housing	2
4	F016A75062	DRIVE BELT MOTOR	1
5	CSM840	COACH BOLT M8 x 25 ZY	1
6	F016A58508	PULLEY CENTRE	1
7	F016A58727	PULLEY HALF 51mm	2
8	F016J10737	Drive Belt Cylinder	1
9	NNM12	NUT M12 NYLOC	2
10	F016L35387	SCREW M6x12	4
11	F016J11091	40V Li-Ion Powerhead	1
12	F016T44492	ROLL PIN 3/32	1
13	F016J11045	Bearing Bracket	1
14	WM5	WASHER M5 FORM A	3
15	SWM5	SPRING WASHER M5	3
16	F016J11343	M5x25 Pozi Pan Screw	3
17	F016L18129	WSH 12.1x6.4	2
18	F016L11382	Pozi Pan Hd Bolt M6	2
19	F016T49429	SELF CUTTING SCREW	7
20	F016J10730	Cylinder Pulley 90 Dia	1
21	F016J11052	Li-Ion Idler Pulley Centre	1
22	F016J11051	Li-Ion Idler Pulley	1
23	F016A75399	RELEASE PIN ASSY	1
24	F016A57698	PINION SHAFT ASSY	1
25	F016A75401	PINION PLATE	1
26	F016A57780	SPACER 20x13	1
27	F016A58579	PULLEY ASSY 150mm	1
28	F016A58992	GUIDE ROLLER S/A	1
29	F016J11408	R/ROLLER DRIVE BELT	1
30	F016A58315	Bearing Spacer	1
31	F016A58316	COMPRESSION SPRING	1
32	F016L08487	SPRING	1
33	F016L66172	Connector	1
34	F016A58822	SPACER DRIVE SHAFT	1
35	F016X66327	Bolt M6 X 35 Zinc Pozi Pan Hd	1
36	WM12	WASHER M12	1
37	NNM6	NUT M6 NYLOC	1
38	F016A58943	Socket Hd Cap Screw M6 X 25	3
39	F016T47640	PINION ASSY	1
40	SWM6	SPRING WASHER M6	3
41	F016A58726	PULLEY HALF 46mm	2

8
PROCESS ROUTING



REV.	ECR	DESCRIPTION	DRAWN BY DATE	CHKD BY DATE
REVISIONS				
<b>TURFMECH</b> <small>Tel: +44 (0)1889 271503 www.turfmech.co.uk</small>		<b>PART DESCRIPTION</b> Li-Ion 12 14 17 <small>REMOVE ALL BURRS AND SHARP EDGES</small>		<b>PART NUMBER</b> <b>LI-ION 12 14 17</b>
		<small>Notice For General Tolerances for Machining. Unless Otherwise Stated  .00 = +/- 0.125mm  .0 = +/- 0.25mm  1 = +/- 0.5mm</small>		<b>MATERIAL DESCRIPTION</b>
<small>General Angular Tolerance = +/- 0.5 degrees</small>		<b>FINISH</b>		<b>WHERE USED</b>
<small>Notice For General Tolerances for Fabrication. Unless Otherwise Stated  100mm and under +/- 1mm  100mm up to 1000 +/- 2mm  1000mm and over +/- 3mm</small>		<b>THIRD ANGLE</b>		<b>WEIGHT</b>
		<b>DIMENSIONS IN mm</b>		<b>NOT TO SCALE</b>

Lib35 Main Assembly

ITEM NO.	PART NUMBER	DESCRIPTION	QTY.
1	F016A58656	SELECTOR KNOB	1
2	F016A57748	Spacer	1
3	F016A57676	L.H. Pivot Bush	1
4	F016T49226	COMPRESSION SPRING	2
5	F016A57995	Compression Spring	1
6	F016A75899	TRANSMISSION COVER	1
7	F016A75088	SIDEPLATE COVER	1
8	F016J11044	Deck Transmission Cover	1
9	F016A58229	SCREW M6x30	5
10	F016J11022	M6x10 Socket Dome Flange Screw	3
11	F01680B115	BASE CYLINDER CASSETTE 14	8
12	F016A75428	REAR ROLLER MODULE	1
13	F016L35411	Wsh 3/4 X 21/64 X .080	3
14	F016J11099	CHASSIS MODULE	1
15	F016A58228	SCREW M6x20	4
16	F016L35457	Nut M8	1
17	F016L35307	WSH SPR 5/16	1
18	F016W25213	SCREW M8x25	1