

8  
PROCESS ROUTING

REV.	ECR	DESCRIPTION	DRAWN BY DATE	CHKD BY DATE
REVISIONS				

<b>TURFMECH</b> <small>Tel: +44 (0)1889 271503 www.turfmech.co.uk</small>	<b>PART DESCRIPTION</b> Li-Ion 12 14 17		<b>PART NUMBER</b>	
	<small>REMOVE ALL BURRS AND SHARP EDGES</small> <small>Notice For General Tolerances for Machining. Unless Otherwise Stated</small> <small>.00 = +/- 0.125mm</small> <small>0 = +/- 0.25mm</small> <small>1 = +/- 0.5mm</small> <small>General Angular Tolerance = +/- 0.5 degrees</small>		<b>LI-ION 12 14 17</b>	
	<b>MATERIAL DESCRIPTION</b>		SHEET 1 OF 1	
	<b>FINISH</b>			
<b>WHERE USED</b>		<b>THIRD ANGLE</b>		
<b>WEIGHT</b>		<b>NOT TO SCALE</b>		
		<b>DIMENSIONS IN mm</b>		

PROPRIETARY AND CONFIDENTIAL THE INFORMATION CONTAINED IN THIS DRAWING IS THE SOLE PROPERTY AND COPYRIGHT OF TURFMECH MACHINERY LTD. IT IS ISSUED FOR INFORMATION USES ONLY AND MUST NOT BE DISCLOSED TO THIRD PARTIES, LOANED, REPRODUCED, IN PART OR USED IN MANUFACTURING FOR ANY OTHER PURPOSE WITHOUT WRITTEN CONSENT

Top handle Assembly

ITEM NO.	PART NUMBER	DESCRIPTION	QTY.
1	F016T49524	Cable Clip	2
2	F016J11082	Cylinder Operation Decal	1
3	F016J10354	30 X 3 X 25mm Flat Sleeve - Black	2
4	F016T49226	COMPRESSION SPRING	1
5	F016T49429	SELF CUTTING SCREW	9
6	NNM6	NUT M6 NYLOC	1
7	F016J11047	Li-Ion Top Handle driven	1
8	F016T49637	SWITCH CASE LOWER	1
9	F016T49229	SWITCH 3 AMP	1
10	F016L65675	Switch Lever Red	1
11	F016T49845	SPRING LEVER RETURN	2
12	F016T49223	BUTTON SWITCH GRIPPER	1
13	F016T49636	Cable Clamp	1
14	F016T49468	POTENTIOMETER	1
15	F016T49481	KNOB SPEED CONTROL	1
16	F016L37457	Bezel - Speed Controller Black	1
17	F016T45527	NUT - SPEED CONTROLLER	1
18	F016A57920	DRIVE CABLE - R/ROLLER	1
19	F016L57924	BALE BAR HOUSING COVER	1
20	F016L57925	Bale Bar Housing Inner	1
21	F016A57928	Bale Bar Bush Housing	1
22	F016A57929	Bale Bar Bush Hous. Cover	1
23	F016L36542	SCREW	2
24	F016J11053	BALE BAR	1
25	F016T56145	COILED PIN	2
26	F016T49507	LEVER BALE BAR	1
27	F0106J11049	Handle Grip	1
28	F016J11074	Electric Camlock Spindle	1
29	F016L66199	Cam Lock Saddle	1
30	F016T48384	Camlock Lever	1
31	F016A58021	TRANSFER - CLUTCH ARROW	1

PROCESS ROUTING

REV	ECR NO.	DESCRIPTION	DRAWN BY DATE	CHKD BY DATE
REVISIONS				
<b>TURFMECH</b> Tel: +44 (0)1889 271503 www.turfmech.co.uk		<b>PART DESCRIPTION</b> Li-Ion 12 14 17 REMOVE ALL BURRS AND SHARP EDGES Notice For General Tolerances for Machining: Unless Otherwise Stated .00 = +/- 0.125mm .0 = +/- 0.25mm 1 = +/- 0.5mm General Angular Tolerance = +/- 0.5 degrees Notice For General Tolerances for Fabrication: Unless Otherwise Stated 100mm and under +/- 1mm 100mm up to 1000 +/- 2mm 1000mm and over +/- 3mm	<b>PART NUMBER</b> <b>LI-ION 12 14 17</b>	SHEET 1 OF 1
		<b>MATERIAL DESCRIPTION</b>		
		<b>FINISH</b>		
		<b>WHERE USED</b>	<b>THIRD ANGLE</b>	
		<b>WEIGHT</b> Kg	<b>DIMENSIONS</b> IN mm	<b>NOT TO SCALE</b>

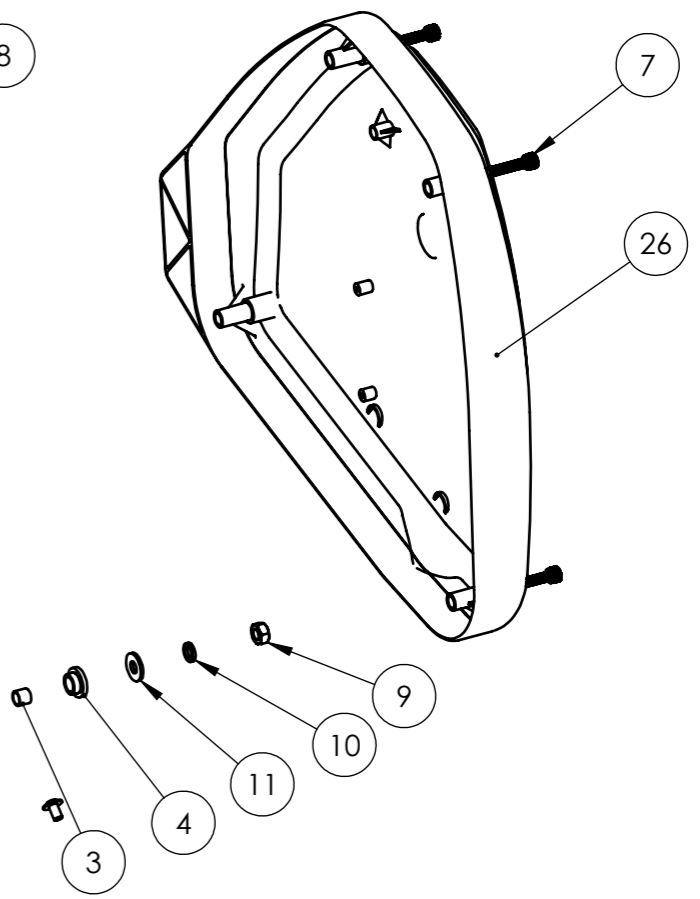
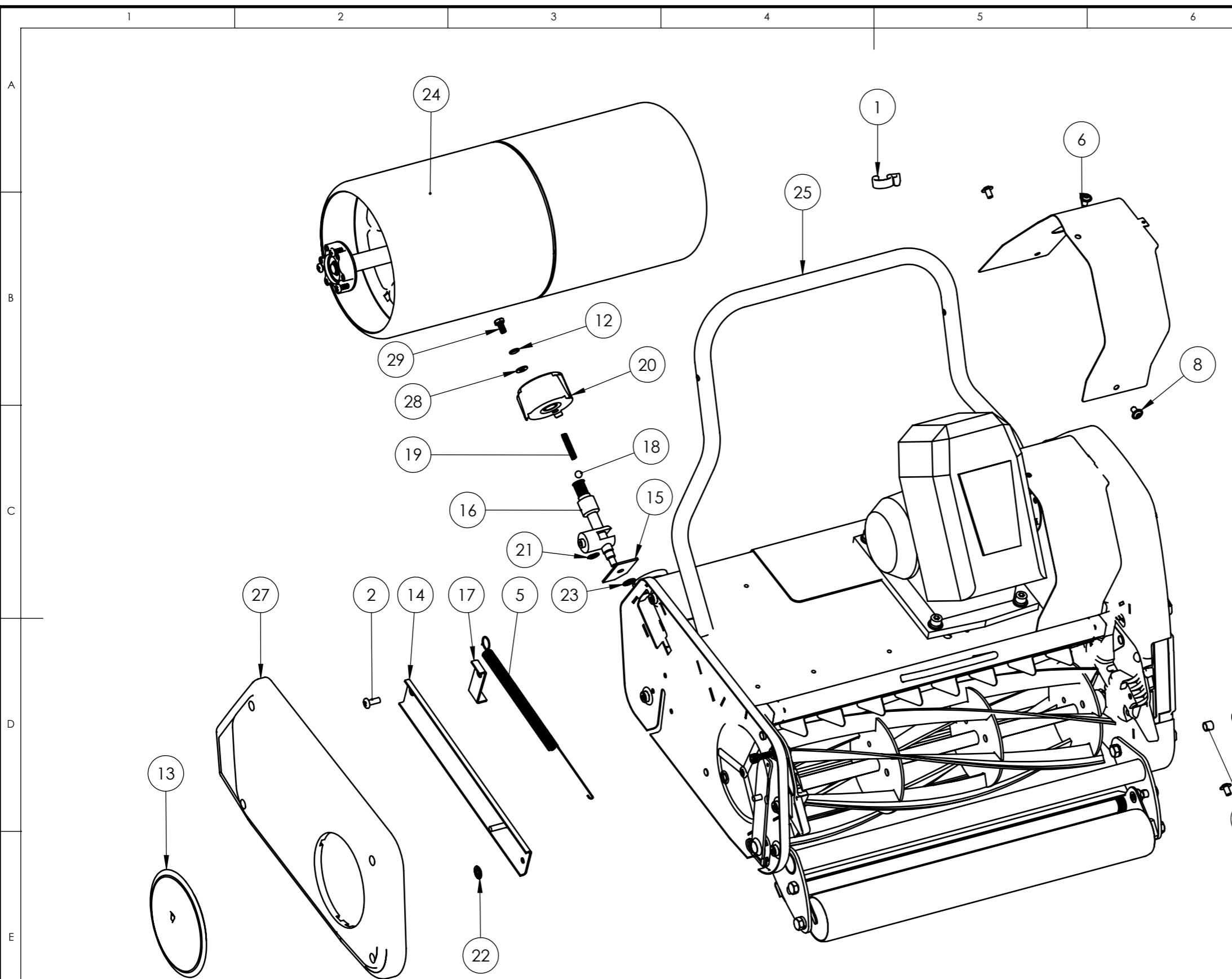
PROPRIETARY AND CONFIDENTIAL THE INFORMATION CONTAINED IN THIS DRAWING IS THE SOLE PROPERTY AND COPYRIGHT OF TURFMECH MACHINERY LTD. IT IS ISSUED FOR INFORMATION USES ONLY AND MUST NOT BE DISCLOSED TO THIRD PARTIES, LOANED, REPRODUCED, IN PART OR USED IN MANUFACTURING FOR ANY OTHER PURPOSE WITHOUT WRITTEN CONSENT

Lib43 Drive Bom

ITEM NO.	PART NUMBER	DESCRIPTION	QTY.
1	F016A75060	Drive Shaft	2
2	F016A75522	Bearing Housing	4
3	F016A75062	Drive Belt Motor	1
4	CSM840	COACH BOLT M8 x 25 ZY	1
5	F016A58727	Pulley Half 51mm	2
6	NNM12	NUT M12 NYLOC	2
7	F016L35387	Screw M6 x 12	4
8	F016J11091	40V Li-Ion Powerhead	1
9	F016T44492	ROLL PIN 3/32" X 5/8"	1
10	F016J11045	Bearing Bracket	4
11	WM5	WASHER M5 FORM A	3
12	SWM5	SPRING WASHER M5	3
13	F016J11343	M5x25 Pozi Pan Screw	3
14	F016T49429	SELF CUTTING SCREW	4
15	F016A57780	SPACER 20x13	2
16	F016J11408	R/ROLLER DRIVE BELT	1
17	F016A58315	Bearing Spacer	1
18	F016A58316	COMPRESSION SPRING	1
19	F016L08487	SPRING	1
20	F016L66172	Connector	1
21	F016X66327	Bolt M6 X 35 Zinc Pozi Pan Hd	1
22	WM12	WASHER M12	2
23	NNM6	NUT M6 NYLOC	1
24	F016A75332	GEAR MOUNTING PLATE	1
25	F016A58667	PULLEY & GEAR S/A	2
26	F016A58579	PULLEY ASSY 150	2

27	F016A58660	INTERMEDIATE GEAR 20T	2
28	F016A57756	SCREW M5 x 12 TAPTITE	9
29	F016J11052	Li-Ion Idler Pulley Centre	1
30	F016J11051	Li-Ion Idler Pulley	1
31	F016A57941	Drive Belt	1
32	F016A75399	RELEASE PIN/INSERT MOULDED C/A	1
33	F016L09227	Rear Roller Pulley	1
34	F016A57698	Pinion Shaft Assy	1
35	F016A58992	Jockey Pulley Arm - Rear Roller	1
36	F016A75401	Pinion Plate Assy	1
37	f016a58530	Pull Off Spring	1
38	F016A58725	WASHER 1.1/4 x 5/8 x .072	1
39	F016A57759	Circlip	2
40	SWM6	SPRING WASHER M6	5
41	NNM8	NUT M8 Nyloc	2
42	F016Z47640	Pinion Assy	2
43	F016J11062	Li-ion Chassis Fab	1
44	SM616	SET SCREW M6 x 16	1
45	WM6C	WASHER M6 Form C	1
46	F016A58422	Pivot Pin	1

8
PROCESS ROUTING



REV.	ECR	DESCRIPTION	DRAWN BY DATE	CHKD BY DATE
REVISIONS				
<b>TURFMECH</b> <small>Tel: +44 (0)1889 271503 www.turfmech.co.uk</small>		<b>PART DESCRIPTION</b> Li-Ion 12 14 17 REMOVE ALL BURRS AND SHARP EDGES Notice For General Tolerances for Machining: Unless Otherwise Stated .00 = +/- 0.125mm .0 = +/- 0.25mm 1 = +/- 0.5mm General Angular Tolerance = +/- 0.5 degrees Notice For General Tolerances for Fabrication: Unless Otherwise Stated 100mm and under +/- 1mm 100mm up to 1000 +/- 2mm 1000mm and over +/- 3mm	<b>PART NUMBER</b> <h1>LI-ION 12 14 17</h1>	SHEET 1 OF 1
		<b>MATERIAL DESCRIPTION</b>		
		<b>FINISH</b>		
		<b>WHERE USED</b>	<b>THIRD ANGLE</b>	
		<b>WEIGHT</b>	<b>DIMENSIONS IN mm</b>	<b>NOT TO SCALE</b>

Lib 43 Main Assembly

ITEM NO.	PART NUMBER	DESCRIPTION	QTY.
1	F016T49524	Cable Clip	2
2	F016L11382	Pozi Pan Hd Bolt M6	2
3	F016A57748	Spacer	1
4	F016A57676	L.H. Pivot Bush	1
5	F016A57995	Compression Spring	1
6	F016J11044	Deck Transmission Cover	1
7	F016A58229	SCREW M6 x 30	4
8	F016J11022	M6x10 Socket Dome Flange Screw	7
9	F016L35457	Nut M8	1
10	F016L35307	WSH SPR 5/16	1
11	F016L35411	Wsh 3/4 X 21/64 X .080	1
12	SWM6	SPRING WASHER M6	7
13	F016A57576	Blank Plate	1
14	F016A75519	Hoc Link	1
15	F016A75521	Hoc Retaining Plate	1
16	F016A58231	Hoc Spindle	1
17	F016A75786	Nut Carrier Guide	1
18	F016T48358	Ball Bearing 5/16 Dia	1
19	F016T48420	Compression Spring Hoc	1
20	F016A58730	Hoc Knob	1
21	F016J10382	Circlip	1
22	F016T48549	Ratchet Plate 6.4Mm	3
23	F016T46684	Ratchet Plate	1
24	F016A75431	Rear Roller Assembly	1
25	F016J11356	Chassis Module	1
26	F016A75900	Transmission Cover Dark Green	1
27	F016A75089	Side Plate Cover R/H - Kens	1
28	WM6C	WASHER M6 Form C	2
29	SM612	M6 X 12 SET SCREW	1